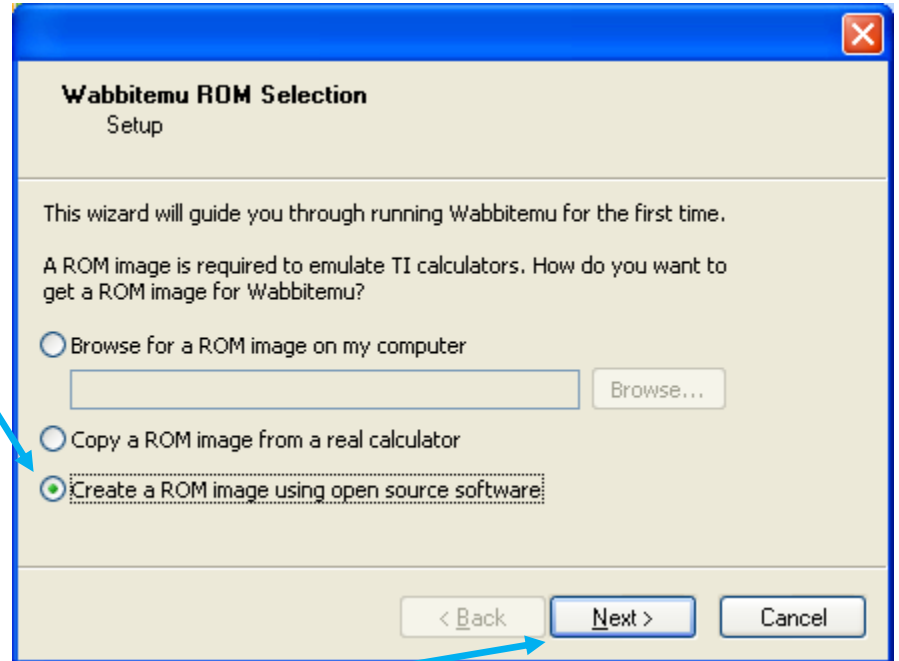
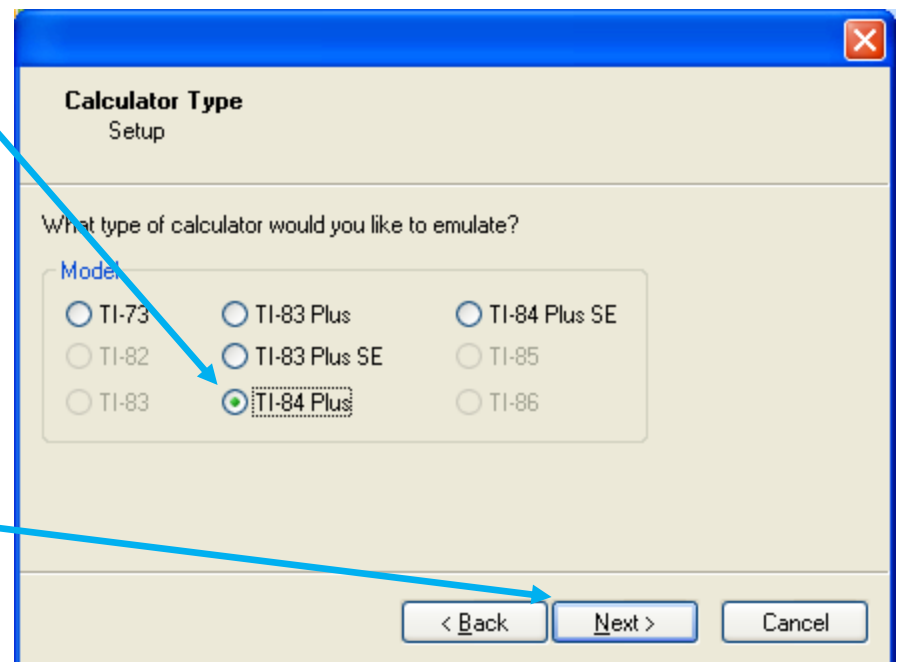


## TI Emulator Installation Instructions

1. Move *Wabbitemu.exe* to your desktop
2. Run *Wabbitemu.exe*
3. Choose "Create a ROM image using open source software"

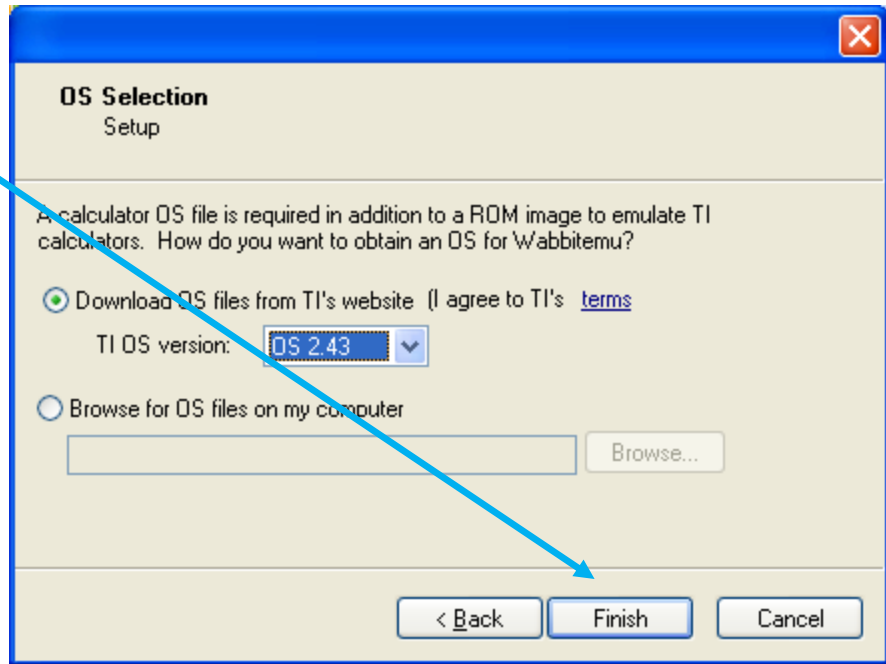


4. Click "Next>"
5. Choose "TI-84 Plus"

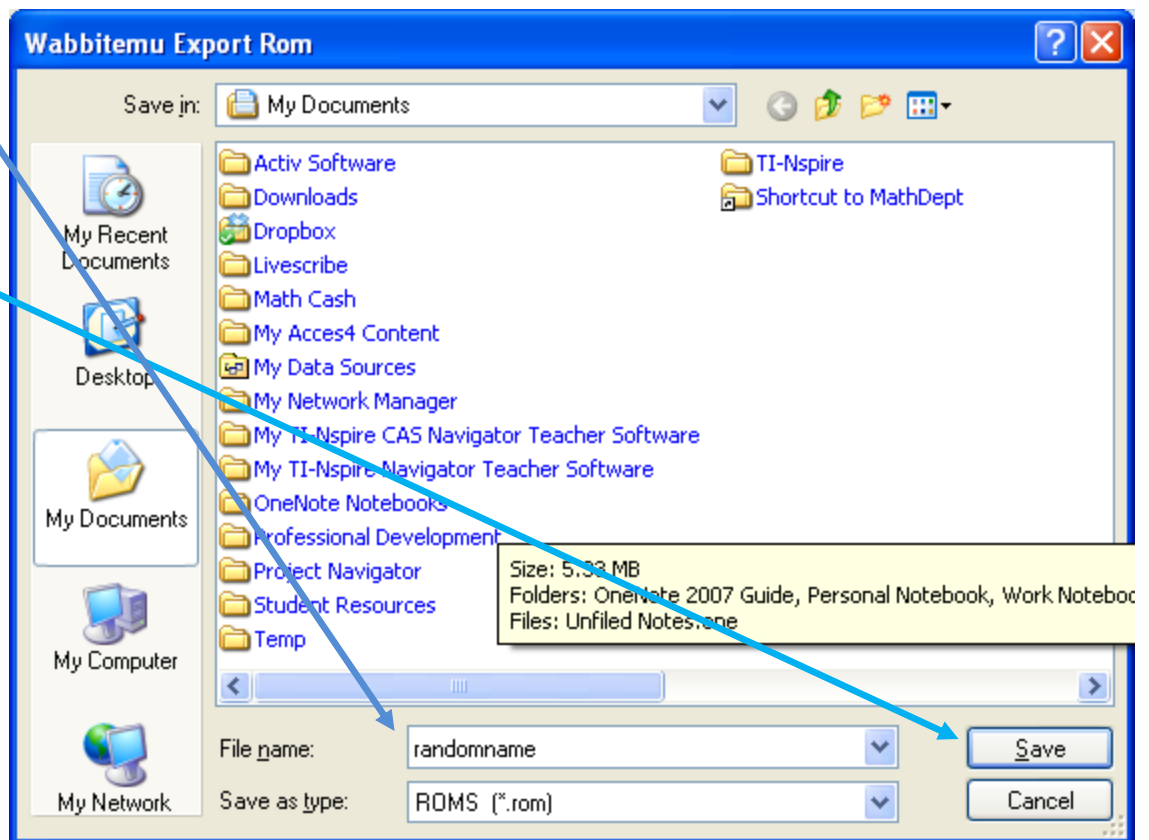


6. Click "Next>"

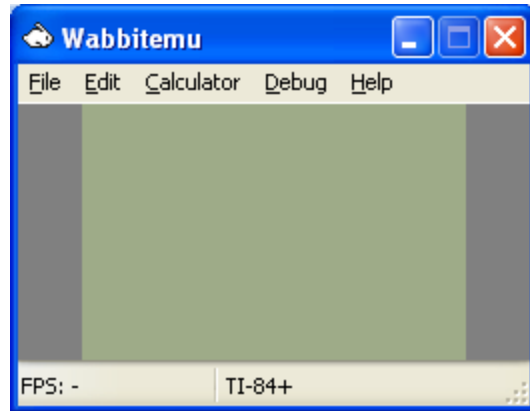
7. Click "Finish"



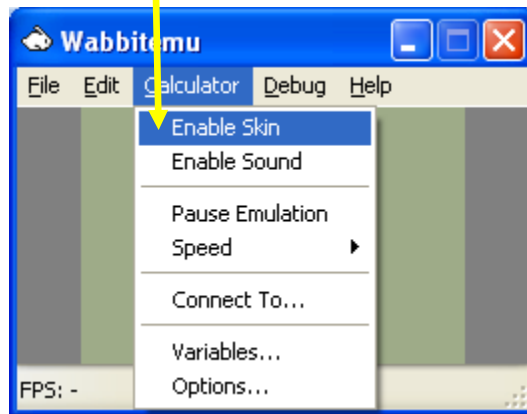
8. Type a file name of your choice in the Save dialog box that opens and click "Save".



9. This window should be shown now.



10. Click "Calculator" in the menu and choose "Enable Skin".



11. Operate the calculator by clicking buttons with your mouse.